

# Social Relationship between Kampong Gendong Residents and Gated/Non-Gated Community in Sendangmulyo Village Tembalang District, Semarang

Retno Susanti<sup>1</sup>, Retno Widjajanti<sup>2</sup>, Grandy Loranessa Wungo<sup>3</sup> and Intan Budiarti<sup>4</sup>

Received: 28 January 2020 Accepted: 23 May 2020

**Abstract:** Population growth in the city of Semarang increases the need for residential land, shifting individuals from the center to the suburbs. Tembalang is a sub-district with a population growth of 3.69%. The trend in population growth is used to build gated homes, for middle and upper class individuals who need more comfortable, secure, quiet housing. However, the existence of a gated community makes a physical separation between community settlements. Privatization of public spaces in gated housing potentially leads to social inequality and lack of interaction with the surrounding community. The purpose of this study was to examine the social relations between the villagers around housing and residents of the gated community. The study uses questionnaires and open interviews interviews with 93 respondents from Kampong Gendong and a hierarchical analysis to examine social relations. The results show that there are social relations between gated housing residents and villagers based on residence, and they carry out several activities together. Also, housing typology influences the strength of the interaction between villagers and residents of the gated homes. In general, gated housing appear as a form of exclusive property with separate environmental facilities, which might be used by villagers to strengthen social interaction. The relations with the surrounding community play an important role in increasing the sense of security for residents of gated housing, unlike the use of perimeter fence or the guards.

*Keywords:* gated community, non-gated community, urban kampong residents, social relations

## INTRODUCTION

Gated Community is a common trend of sub-urbanization (Blakely & Synder, 1997). Urbanization results in higher population growth, leading to problems such as limited availability of resources to meet the needs of the community, insufficient land for settlements, high demand for infrastructure and social facilities, and lack of jobs, among others. The increase in population beyond the availability of these resources certainly has enormous long-term impacts, such as crime, scarcity of resources, declining environmental quality, lousy infrastructure, and social friction. This inconvenience necessitates a new concept of dwelling with walls, perimeter fences, and entrances to the arena (gated community) equipped with complete facilities and adequate infrastructure. The desire for a more comfortable, secure, and exclusive residential environment facilitates the growth of gated communities. Also, the fear of crime is one of the main reasons for the development of this settlement pattern (Zhang & Zheng, 2019)

---

<sup>1</sup>Urban and Regional Planning Department of Diponegoro University

Correspondence: retnosusanti2010@yahoo.com

Besides, there is a privatization of space which causes the separation of public facilities and services such as schools, roads, parks (Widhyharto, 2009). As a result, the public facilities to be utilized by the general public outside the gated community reduce. The privatization of public spaces and facilities causes the people neighboring the gated community not to use them and causes social inequality (Polanska, 2014). However, it does not rule out the possibility of positive interaction between the gated community and the neighboring people (Evianny, 2015). In Asian countries such as Indonesia, where social dependence is high, there is a tendency of positive interactions between these two mutually beneficial groups of people. For instance, villagers around the housing get jobs to support their economy, while the rich get household assistants, construction workers, masseurs, and security guards.

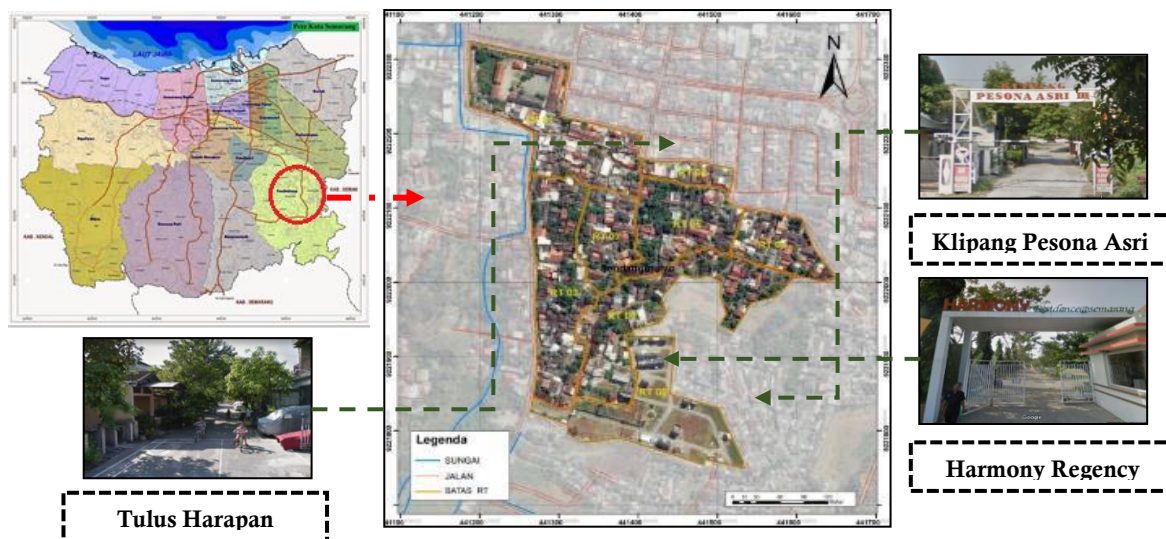
The city of Semarang is affected by extensive urbanization, having a high population growth rate, on average, 1.66% per year (Badan Pusat Statistik, 2018). Population growth increases the need for land for settlements, and thus facilitates the growth of the gated community, especially for the middle and upper-class people who want more comfortable, safe, and quiet housing. Adjusting to the Semarang City Area Spatial Plan, housing development is carried out towards the eastern part of the town. This approach complies with the directions of the Regional Spatial Plan driving rapid housing growth, including gated housing. Tembalang District consists of 12 Sub-Districts (134 Neighborhood Groups and 984 Neighborhood Associations) with 65 housing complexes spread throughout the Kelurahan, and some being gated.

Occupancy in gated structures is identical to privatization and has the potential to impact social relations. The concept of gated community results in boundaries due to a better-built environment, though the difference in facilities affects social relationships. The purpose of this study is to examine the social relations between villagers and gated community members based on the perception of the villagers. The research location was in Gendong Village, located in RW VIII, Sendangmulyo and consists of 7 RTs surrounded by gated and non-gated housing pattern.

## METHOD

A gated community is defined as a physical space characterized by fenced or walled elements and separated from other environments (Rasidah, Johari, Najib, & Salleh, 2012). Usually, a fenced community is surrounded by walls, where access is limited through the creation of physical boundaries such as walls, fences, or gates. Generally, gated housing has restricted access to the public, and only residents are allowed in (Blakely & Synder, 1997). Non-Gated Community is defined as housing not surrounded by a perimeter wall. Communities live in non-gated residential areas and do not need individual access or control of exits as in the gated housing (Abdullah, Najib, Salleh, & Rasidah, 2012). Non-gated structures are many residential layouts but do not have fences, security posts, or CCTV. It always consists of houses which are not uniform, and the control of the shape of the building is not as rigid as in gated housing.

The physical characteristics of gated housing and the typical occupants contained therein is explained as follows (Blakely & Synder, 1997); there are physical barriers to inhibit the access and movement of people or vehicles not desired, privatization of public services such as separate waste collection and protection against security threats, has a full, main access road, a high gate fence and is carefully guarded for 24 hours, consist of a surveillance system for people who come and go manually and electronically (via CCTV cameras, speakerphones, and electronic doors), and contain its separate public facility and is only used by residents.



Source: Bappeda Kota Semarang 2019

**Figure 1. Research location of Gendong village and three types of housing built around it**

This Study involved 93 respondents who lived in RT 1 to RT 7 in Kampong Gendong RW VIII, Sendangmulyo Village, Tembalang District, Semarang City. This location was chosen since the original village is surrounded by 3 housing, Harmony Housing with fences, gate-gate and guarded, Klipang Pesona Asri Housing with emi-Gated Community - fenced, gate-door but not guarded and Tulus Harapan Housing, where there are no fences, gates or guards. The respondents were chosen through simple random methods, and the information they gave was explored through structured interviews. The information obtained from the village community include 1) residents well known, 2) opinions on three forms of housing security, 3) views on interactions between housing residents and native villagers.

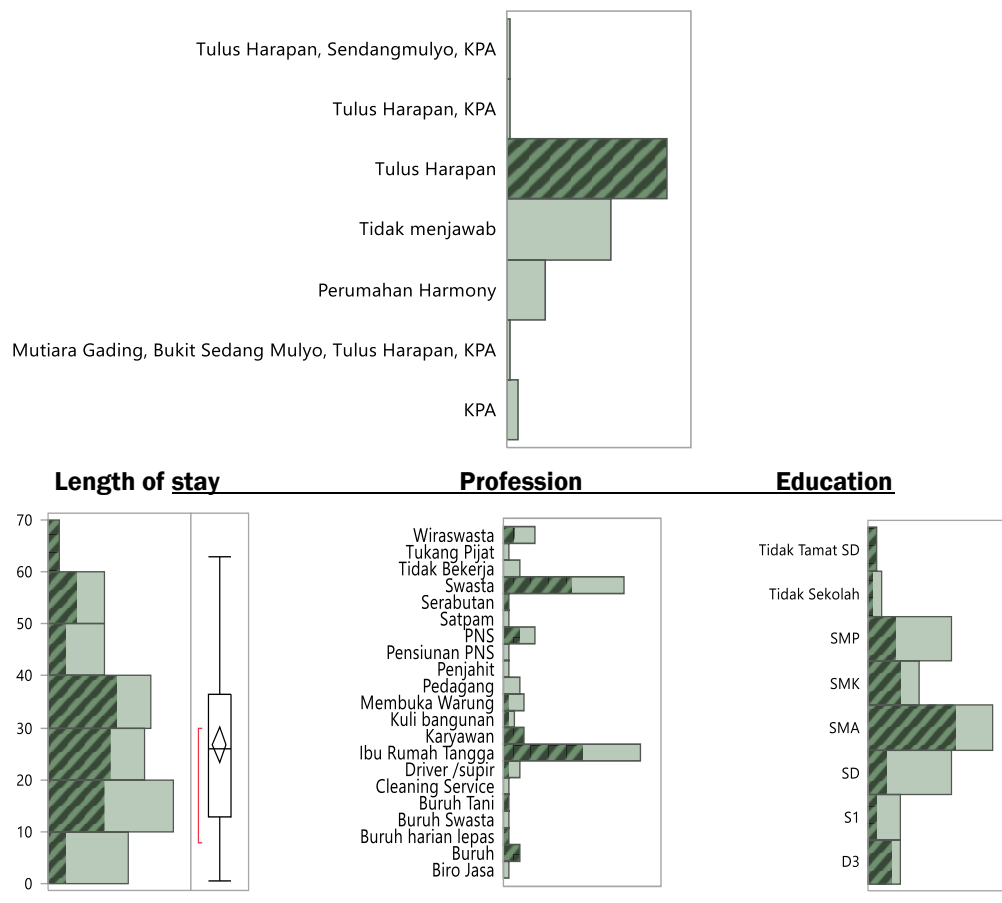
The questions were made in half-open form to understand the reasons behind the answers given by respondents deeply. To connect between the **characteristic** variables of respondents, JMP 13 software was used while the respondents' answers were codified, categorized, and analyzed for the formation of themes using NVivo 12 plus software. Themes from respondents' answers are processed using hierarchical analysis. The analysis is carried out to obtain the level of strength of the theme, which describes the social relations between the villagers and the residents of the housing nearby.

**RESULTS AND DISCUSSIONS**

**The most well-known housing residents and their relationship to the characteristics of Kampong Gendong people.**

Gendong villagers are well acquainted with their environment. However, they have a different perspective when it comes to the outside environment. The social interaction between the people of Gendong village and the residents of the estate is dependent on the social quality of the community, which is also influenced by personal, household, neighborhood, and mobility characteristics (van den Berg, Sharmeen, & Weijs-Perrée, 2017). Residents of Tulus Harapan Housing are well known by the respondents who have settled in Gendong village for 20-30 years, the majority of whom are high school (SMA) graduates and housewives.

The people of Gendong village are familiar with Tulus Harapan Housing residents since several factors influence it. First, it is the earliest housing and one of the oldest estates in Sendangmulyo Kelurahan, built in the 1990s. Tulus Harapan Housing Residents have long lived side by side with residents of the Gendong village. Second, the desire to have acquaintances/friends/ relations / even relatives who live in Tulus Harapan Housing is also critical. The relationship made it easier for residents of these two places to know each other. Third, the location of Tulus Harapan Housing is adjacent to the village of Gendong. The meeting between residents was due to the proximity of the housing location and only blocked by the portal. Fourth, villagers often pass the Tulus Harapan residential neighborhood road, an alternative route for accessing Jalan Tulus Harapan and Jalan Klipang Raya. Fifth, the existence of joint activities carried out made the residents of the Gendong Tulus Harapan Housing know each other. Joint activities are routinely carried out by RW VIII, and mostly involve inviting residents of Tulus Harapan Housing. The activities include community service such as jointly cleaning and repairing minor damage in the environment, recitation, sports activities, and PKK, where the wives have an agenda of monthly meeting activities to improve the quality of family life. The meetings further explained the relationship between the residents of Gendong village and Tulus Harapan housing.



Source: Author, 2019

**Figure 2. Characteristic of Kampong Gendong resident who know resident of Tulus Harapan Housing**

Sixth, Tulus Harapan Housing is one of the locations where people work in Kampong Gendong. Some residents serve as security guards and household assistants in the housing complex. Seventh, the majority of the residents of RW VIII are small traders and provide various services. Many service users and consumers come from Tulus Harapan housing residents.

### Social relations between residents of Kampong Gendong and residents of housing (Gated and Non-Gated Community)

The results of the analysis of social relations are shown in Table 1 and Scheme Figure 3. The Table and Scheme explains the perceptions of the people of Kampong Gendong on social relations with housing residents, both gated and non-gated.

**Table 1. The result of the coding of perception of social relations of Gendong Villagers towards housing residents (gated and non-gated)**

No	Codes	Aggregate number of coding references	Aggregate number of items coded
1	Reason to blending\exchange information	1	1
2	Reason to blending\can work in a residential environment	1	1
3	Reason to blending\rarely meet	1	1
4	Reason to blending\discrepancy	1	1
5	Reason to blending\add brotherhood and acquaintance	32	30
6	Reason to blending\maintain security	1	1
7	Reason to blending\help each other	14	14
8	Reason to blending\not discriminating	1	1
9	Reason to blending\live in a nearby location	1	1
10	The best way to blend in\socialize	29	28
11	The best way to blend in\participate in community activities	49	44
12	The best way to blend in\help each other	1	1
13	The best way to blend in\succumb to each other	2	2
14	The best way to blend in\mutual respect	2	2
15	The best way to blend in\gather place	2	2
16	The best way to blend in\not arrogant	1	1
17	The best way to blend in\not closed	1	1
18	Intensity of joint activities\once every two weeks	8	8
19	Intensity of joint activities\once a week	8	7
20	Intensity of joint activities\once a year	2	2
21	Intensity of joint activities\every six months	1	1
22	Intensity of joint activities\once every two months	1	1
23	Intensity of joint activities\once a month	14	14
24	Intensity of joint activities\once every three months	1	1
25	Intensity of joint activities\uncertain	4	4
26	Joint community housing activities\Religious	8	7
27	Joint community housing activities\Health	1	1
28	Joint community housing activities\Sports	2	2
29	Joint community housing activities\Social	40	38
30	Opinions need to blend\need	74	74
31	Opinions need to blend\no need	1	1
32	Easy Explanation of Easy Housing\citizens cohesiveness	1	1
33	Easy Explanation of Easy Housing\residential location	18	18
34	Easy Explanation of Easy Housing\longest housing	7	7
35	Easy Explanation of Easy Housing\residents work in housing	1	1
36	Easy Explanation of Easy Housing\housing residents often participate in activities	2	2
37	Fence And Guard Housing\Limits between residents	1	1
38	Fence And Guard Housing\Security	35	35
39	Fence And Guard Housing\freedom	13	13
40	Fence And Guard Housing\amenities	3	3

No	Codes	Aggregate number of coding references	Aggregate number of items coded
41	Fence And Guard Housing\ <i>discrepancy</i>	3	3
42	Fence And Guard Housing\ <i>Socialization</i>	15	13
43	Housing Fence Without Guard\ <i>visiting hours are limited</i>	6	6
44	Housing Fence Without Guard\ <i>security</i>	9	9
45	Housing Fence Without Guard\ <i>amenities</i>	3	3
46	Housing Fence Without Guard\ <i>less profitable</i>	2	2
47	Housing Fence Without Guard\ <i>utilize facilities</i>	1	1
48	Housing Fence Without Guard\ <i>easy to pass</i>	2	2
49	Housing Fence Without Guard\ <i>Socialization</i>	8	8
50	Housing Fence Without Guard\ <i>do not disturb</i>	5	5
51	Housing Fence Without Guard\ <i>not easily skipped</i>	2	2
52	The easiest housing to blend\ <i>Harmony</i>	5	5
53	The easiest housing to blend\ <i>KPA</i>	10	10
54	The easiest housing to blend\ <i>depends on the citizens</i>	2	2
55	The easiest housing to blend\ <i>tulus harapan</i>	51	51
56	The Housing Is Not Fenced And Is Not Maintained\ <i>housing facility</i>	1	1
57	The Housing Is Not Fenced And Is Not Maintained\ <i>security</i>	31	31
58	The Housing Is Not Fenced And Is Not Maintained\ <i>freedom to enter</i>	11	11
59	The Housing Is Not Fenced And Is Not Maintained\ <i>amenities</i>	2	2
60	The Housing Is Not Fenced And Is Not Maintained\ <i>Criminality</i>	2	2
61	The Housing Is Not Fenced And Is Not Maintained\ <i>sociable</i>	6	6
62	The Housing Is Not Fenced And Is Not Maintained\ <i>social strata</i>	3	3

Source: Author, 2019

The above scheme (figure 3) shows the social relations between residents, depicted in the form of a large outer circle. From the results of the codification and categorization, four main themes are produced (the inner circle). The size of the circle shows the extent of the strength of the theme.

*Theme 1* : Perception of the interaction between villagers and housing residents (gated and non-gated)

*Theme 2* : Villagers' perceptions of the form/typology of housing based on the existence of a limiting fence and the presence of security guards.

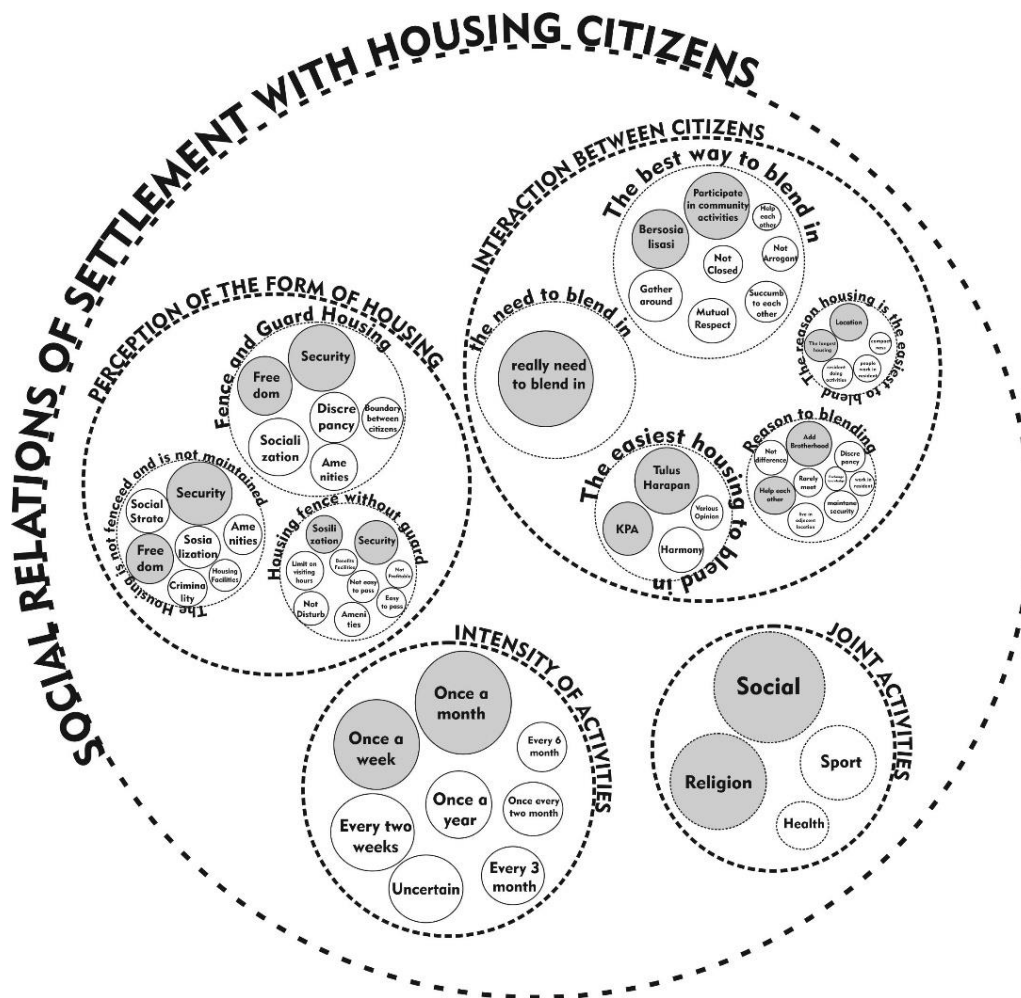
*Theme 3* : Perception of the intensity of the activities carried out together

*Theme 4* : Perception of the types of activities carried out together

### **Theme 1: perception of the interaction between villagers and housing residents (gated and non-gated)**

According to 74 respondents, it is essential to interact with residents of gated homes around Kampong Gendong. Relations between neighbors, despite different environments, still need to be maintained. Interaction and communication are essential in maintaining social quality in the community. For instance, it helps avoid conflicts between residents and helps blend them. Undeniably, the best way to mingle is to participate in activities organized by residents and individuals should be active in socializing. The residents of the Tulus Harapan housing complex are the easiest to mix and interact with. Also, the individuals living in the Klipang Pesona Asri housing complex easily interact with others, though not as much as those from Tulus Harapan Housing. Mingling adds a sense of brotherhood and encourages people to help each other to solve problems. This finding is in line with (Lelévrier, 2013), which stated that social interaction is mediated by two factors,

ease of access between two regions and the methods for interacting, either through spatial or physical regulation. This is evident in Tulus Harapan housing, which is easily accessible since it is not fenced, lacks security, and interact with Gendong village through various activities. Social interaction involves activities which facilitate communication between two or more people. Tulus Harapan housing residents easily interact with other villagers, especially due to their close location. The fact that Tulus Harapan is the earliest housing built also influences intertwined interaction. Also, residents' perceptions of the typology of housing with no guards or gates made it easy to carry out various activities together.



Source: Author, 2019

**Figure 3. Schematic of Social Relations between residents of gendong Village and Housing residents (gaed and non-gated Community)**

**Theme 2: villagers' perception of housing form/typology based on the presence of a fence and security guards.**

There are three housing typologies built around the Kampong Gendong RW VIII settlement, (1) fenced and guarded housing, (2) fenced housing without security guards and



(3) no fencing or security officers. This section examines how the community of Kampong Gendong perceives these three housing typologies.

a. Fenced and guarded housing

In general, 35 respondents revealed that typologies with fenced and guarded housing certainly gave rise to a sense of security for housing residents. Gated community housing is closely guarded against the surrounding environment to enhance security for residents (Blakely & Synder, 1997). The boundaries are in the form of fences and strict safeguards aimed at ensuring the outsiders do not quickly enter the housing. Second, 15 respondents explained the interaction of the residents of the gated community with the villagers. With the presence of fences and security guards, respondents feel their interactions with residents are restricted (gated community). The impression of being closed and self-limiting found in housing residents make communication difficult. Third, 13 respondents stated that socializing is limited due to restrictions on visiting hours. The typology of gated housing usually has visiting or portal/gate closing hours. This condition is also considered by the public to be challenging for hospitality at certain hours.

Fourth, gaps arise from the type of housing fenced around and protected since it gives the impression of distinguishing between environments. Differences in the characteristics and classes of individuals encourage social conflict (Roitman, 2010). Respondents assume the typology of fenced and guarded housing indicates a vast social gap at the location. Fifth, respondents assume, although it still debated, typology of fenced and guarded housing provides more comfort for residents. The availability of various facilities and services provided in gated housing offers comfort and differs from ordinary residential environments (Salah & Ayad, 2018). Sixth, boundaries between citizens are also a critic. According to the respondents, the existence of housing gates limits the interaction with housing residents. This condition is in line with the theory previously discussed, which states that the existence of gates and guards is a social dilemma for gated communities since it limits social contact and weakens the bonds which form social contracts with citizens outside it (Blakely & Synder, 1997).

b. Housing without a fence and security guards

First, the people of Gendong village believe the need for security and being away from the disruption of social activities is essential for housing residents even though it might be detrimental to the residents of the housing itself. Thus housing without a fence and security guards is perceived to be more appropriate. Second, 11 respondents were concerned about the freedom to enter the housing environment. The housing is not fenced and does not have any advantage for the people of Kampong Gendong. Villagers easily traverse roads in residential neighborhoods. Interaction between housing residents and villagers might be more flexible than homes with fences and guards. Third, according to respondents, freedom of physical contact remove barriers to social interaction. Fourth, social strata also concerned the respondents. The homes were not fenced, and lack of security guards might eliminate social strata. Fenced and guarded housing tend to have a different representation due to features such as different facilities, security, and lifestyle (Roitman, 2010). In the absence of fences and guards, the differences in a social level reduce significantly. Fifth, comfort is a prime concern, and according to the residents, the low level of security would open up opportunities for crimes.

c. Housing with a fence around and not guarded security

The absence of security guards gives a feeling of insecurity, not only for housing residents but also for villagers living in the vicinity. Fear of crime is a response from living in urban areas (Roitman, 2010). Generally, the lack of security makes the housing environment more prone to crime. Second, untight guarding gives people the freedom to enter and leave the housing environment. Third, the use of housing facilities benefits the residents more. For instance, the tendency to utilize public facilities in housing is higher, and no one is ignoring such opportunities. Fourth, the typology of housing with the



absence of guards turned have positive and negative impacts. The residents take advantage of housing facilities and access environmental roads. However, it is disadvantageous due to security concerns security arising from differences in facilities and their utilization (Salah & Ayad, 2018).

### **Theme 3: perception of doing joint activities intensity**

Activities which might be carried out once a month are supported more by the villagers. In case the period is not too short or too long, it becomes an option, adjusting to the time and financial availability which is more flexible. Once a month, activities might be carried out by involving more people and significant goals. Also, activities carried out once a week with more focused individuals and specific activity objectives are considered.

### **Theme 4: perception of the types of activities carried out together**

Interaction occurs where there is communication or action taken on a specific activity. From the interviews, the villagers explained their perceptions about the activities often carried out by housing residents. Social activities are often carried out between ordinary villagers and gated housing residents. The planned activities include PKK, Community Service, Arisan, and thanksgiving. A total of 8 respondents discussed religious activities mostly attended by residents, including religious studies, activities in the mosque, breaking the fast together, and celebrating religious holidays. In case social activities between residents cannot be carried out inside the house or in different environments, field and outside space are used (Zerouati & Bellal, 2019).

The least discussed activities include health and sports and may include joint exercises between residents, Posyandu activities (health monitoring activities for toddlers and older adults) or healthiness check activities. The joint social activities are mostly carried out once every month. Other social activities are conducted with unscheduled time depending on the direction or invitation of residents, usually for events which are sudden or spontaneous. From these activities, social interactions have been conducted as explained earlier and involve carrying out an activity together, at one time (Soekanto, 2002).

## **CONCLUSION**

Fenced communities have become a trend in urban settlement environments. The famous gated community members live side by side with urban village residents (Zhang & Zheng, 2019). The gated housing is often identified with social conflict due to the absence of interaction (Mousavinia, Pourdeihimi, & Madani, 2019). From a case study of the social relations between residents of Kampong Gendong and gated housing residents in Sendangmulyo Village, there was a social interaction between residents of the settlements and gated housing members through joint activities. The typology of housing, gated, and non-gated, does not affect interactions between the two residents. Both understand the need for security but still have freedom and ease of access. Physical restrictions are used as a form of security needs of residents of gated housing, different from the social interaction required. Community members need each other, keep meeting, and competing to interact, bringing economic and social benefits. Each city or place where different interactions occur depends entirely on the way of thinking of both residents (Lai, 2016). An excellent social relationship with the surrounding community is significant in increasing a sense of security for the housing residents.

## **ACKNOWLEDGEMENT**

This research was supported financially by the Faculty of Engineering, Diponegoro University, Indonesia, through the 2019 Strategic Research Grant.

## REFERENCES

- Abdullah, A., Najib, M., Salleh, M., & Rasidah, S. (2012). Fear of Crime in Gated and Non-gated Residential Areas. *Elseview*, 35(December 2011), 63–69.
- Badan Pusat Statistik. (2018). *Kota Semarang dalam Angka*.
- Blakely & Synder. (1997). *Fortress America Gated Communities in The United States*. Washington D. C: Brookings Institution Press.
- Eviany, R. S. (2015). *Analisis Dampak Munculnya Perumahan Dengan Konsep Komunitas Berpagar (Gated Community) Di Desa Sorenggen Kabupaten Sleman Dalam Perspektif Sustainable Development*.
- Lai, L. W. C. (2016). “Stone walls do not a prison make, nor iron bars a cage”: The institutional and communitarian possibilities of “gated communities.” *Land Use Policy*, 54, 378–385.
- Lelévrier, C. (2013). Social mix neighbourhood policies and social interaction: The experience of newcomers in three new renewal developments in France. *Cities*, 35, 409–416.
- Mousavinia, S. F., Pourdeihimi, S., & Madani, R. (2019). Housing layout, perceived density and social interactions in gated communities: Mediatonal role of territoriality. *Sustainable Cities and Society*, 51(July), 101699.
- Polanska, D. V. (2014). Gated Communities and the Construction of Social Class Markers in Postsocialist Societies: The Case of Poland. *Journal SAGE*, (November 2010).
- Rasidah, S., Johari, N., Najib, M., & Salleh, M. (2012). Sense of Community in Gated and Non-Gated Residential Neighborhoods. *Procedia - Social and Behavioral Sciences*, 50(July), 818–826.
- Roitman, S. (2010). Gated communities : definitions , causes and consequences. *Urban Design and Planning*, (March), 31–38.
- Salah, N. M., & Ayad, H. M. (2018). Why people choose gated communities : A case study of Alexandria metropolitan area. *Alexandria Engineering Journal*, 57(4), 2743–2753.
- Soekanto, S. (2002). *Sosiologi Suatu Pengantar*. Jakarta: CV Rajawali.
- van den Berg, P., Sharmeen, F., & Weijs-Perrée, M. (2017). On the subjective quality of social Interactions: Influence of neighborhood walkability, social cohesion and mobility choices. *Transportation Research Part A: Policy and Practice*, 106(July), 309–319.
- Widhyharto, D. S. (2009). *Komunitas Berpagar : Antara Inovasi Sosial dan Ketegangan Sosial ( Studi Kasus Komunitas Berpagar di Propinsi D . I. 13*(November), 204–230.
- Zerouati, W., & Bellal, T. (2019). Evaluating the impact of mass housings’ in-between spaces’ spatial configuration on users’ social interaction. *Frontiers of Architectural Research*, (xxxx).
- Zhang, S., & Zheng, G. (2019). Gating or de-gating? The rise of the gated village in Beijing. *Habitat International*, 85(January), 1–13.