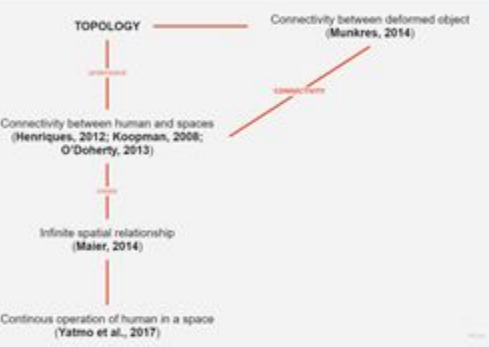


TA 156
SEMARANG TRADITIONAL MARKET BASED ON TOPOLOGICAL APPROACH
 Using the topological map as a basis for social space programming

KONSEP

ISSUE:
 Menciptakan pasar dengan sirkulasi menyeluruh dan berkesinambungan sehingga dapat mengurangi negative space. Untuk mencapai tujuan tersebut, perancangan ini menggunakan pendekatan **TOPOLOGI**.



TRAJECTORY

Pengaplikasian konsep topologi menggunakan trajectory yang didapat dari penggabungan data konteks dan data jarak tempuh.



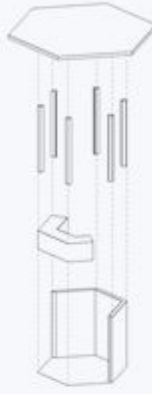
KIOSK MECHANISM

TYPE-1



Kiosk tertutup yang memiliki 6 sisi dari kiosk terbagi menjadi 3 sisi void dan 3 sisi solid dan memiliki meja

Roof



Column

Desk

Wall



TYPE-2



Kiosk terbuka yang hanya memiliki 3 sisi sebagai meja



RULE

Grid



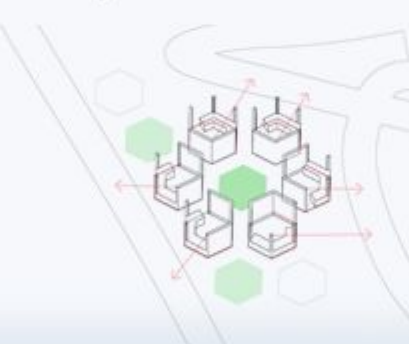
Penyusunan kios dan green area pada grid



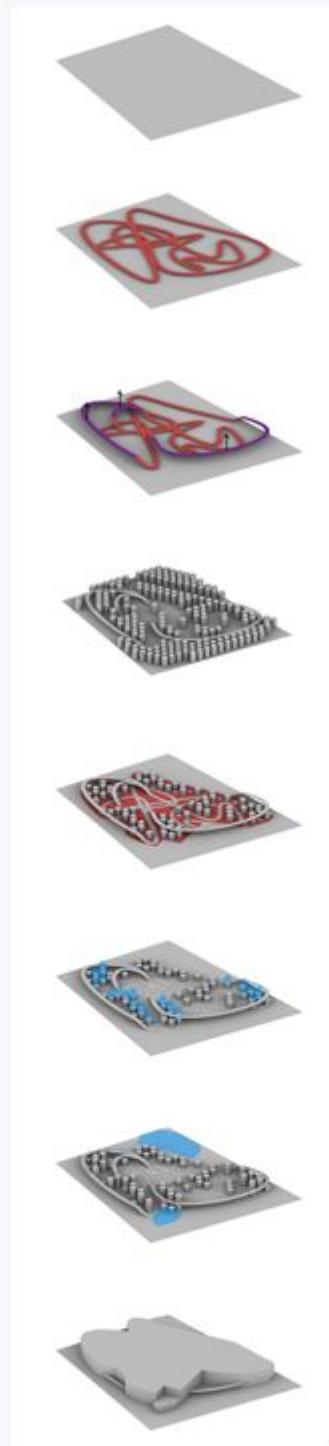
Orientasi kios



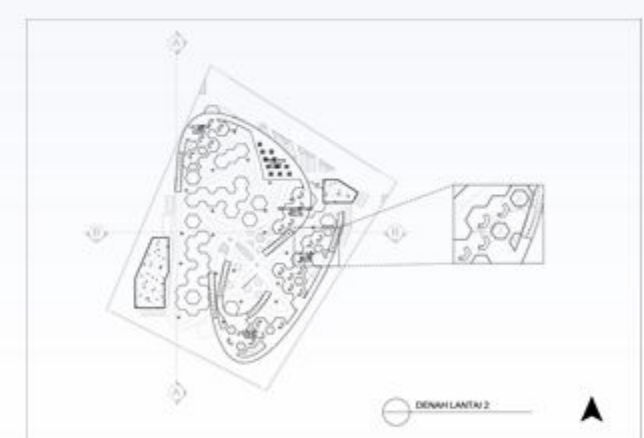
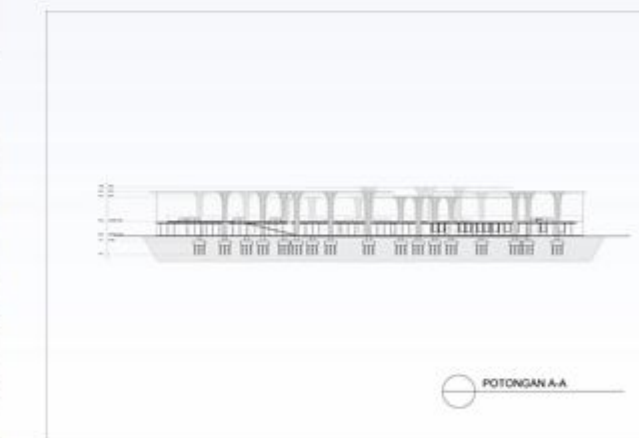
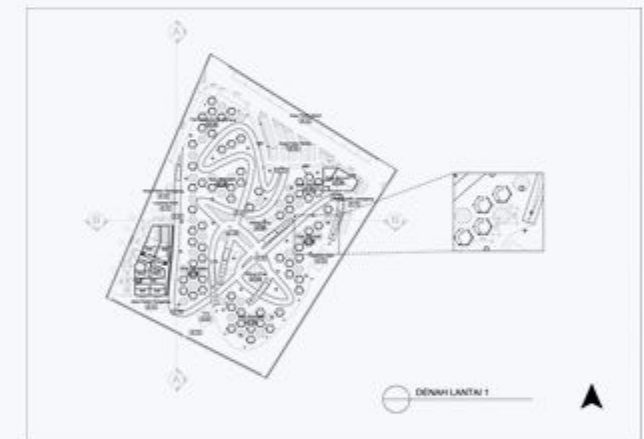
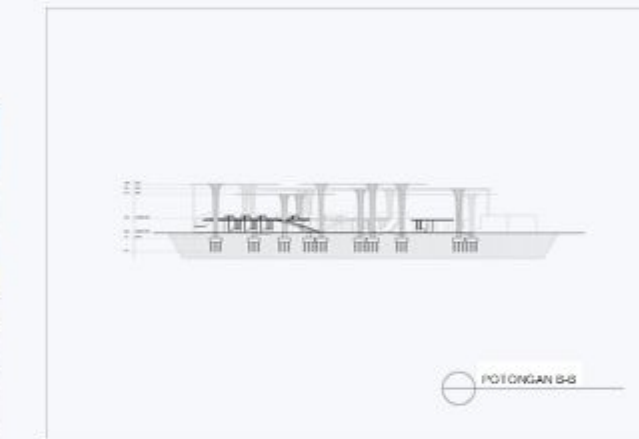
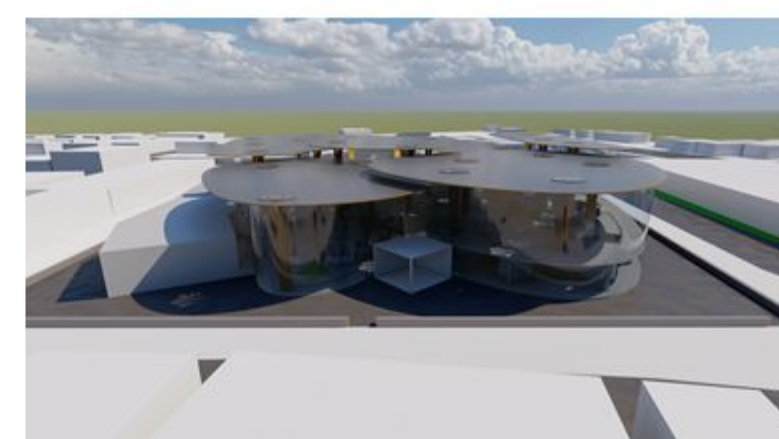
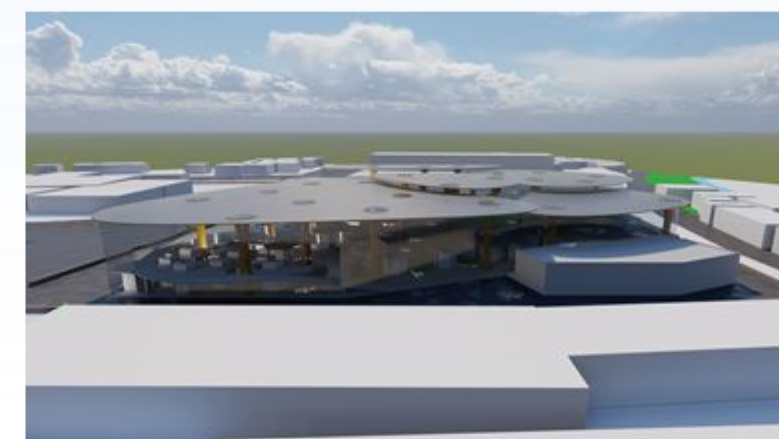
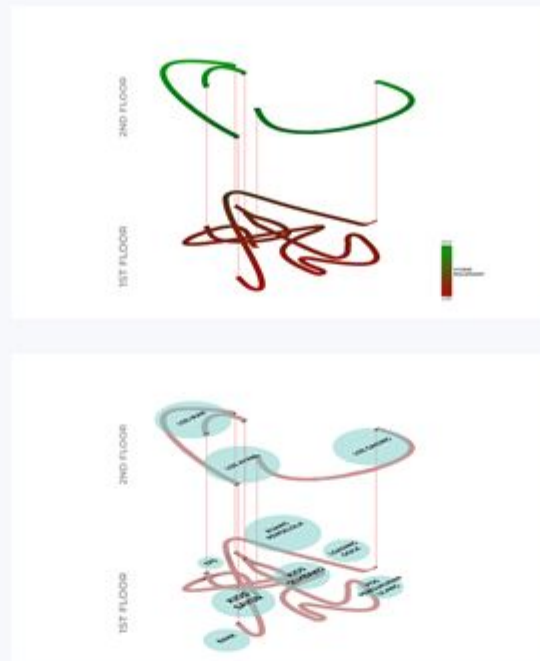
Penempatan Kiosk



MASSING PROCESS



ZONING



REFERENSI

Henriques, V. M. J. (2012). Three-dimensional temperature mapping of solar photospheric fine structure using Ca II H filtergrams. *Astronomy & Astrophysics*, 548, A114. <https://doi.org/10.1051/0004-6361/201220344>

Koopman, S. (2008). Cutting Through Topologies: Crossing Lines at the School of the Americas. *Antipode*, 40(5), 825-847. <https://doi.org/10.1111/j.1467-8330.2008.00639.x>

O'Doherty, D. P. (2013). Off-Road and Spaced-Out in the City: Organization and the Interruption of Topology. *Space and Culture*, 16(2), 211-228. <https://doi.org/10.1177/1206331213475774>

Yatmo, Y. A., Atmodiwirjo, P., & Paramita, K. D. (2017). Topological Reading of Movement Connectivity in Sensory Integration Space for Autistic Children. *Space and Culture*, 20(1), 24-41. <https://doi.org/10.1177/1206331216646060>