



Research Article

Microscopic Phase Structure of Mo-based Catalyst and Its Catalytic Activity for Soot Oxidation

Congwei Mei¹, Yinnan Yuan^{1,2}, Xianming Li¹, Deqing Mei^{1*}

¹School of Automobile and Traffic Engineering, Jiangsu University, Zhenjiang, Jiangsu 212013, China

²School of Energy, Soochow University, Suzhou, Jiangsu 215006, China

Received: 19th July 2016; Revised: 30th August 2016; Accepted: 9th September 2016

Abstract

The MoO₃ catalysts supported on nano-scale TiO₂ with various loading rates (5%, 10%, 20%, and 40%) were prepared by an impregnation method. The phase structures of nano-scale MoO₃/TiO₂ catalysts were characterized by Brunner-Emmet-Teller, Fourier Transform Infrared Spectra, X-ray Diffraction, and Scanning Electron Microscope. The oxidation activities of catalysts over diesel soot were performed in a Thermogravimetric Analysis system. The kinetics of the catalytic oxidation process was analyzed based on Starink method. The characterization results showed that the phase structure of MoO₃ supported on TiO₂ depends heavily on the molybdenum contents, which put great effects on soot oxidation. The orthorhombic crystal system (α -MoO₃) appeared on the surface of the catalysts when the MoO₃ exceeds 10%. Due to the low melting point and good surface mobility of MoO₃, the catalytic activity was increased and the characteristic temperatures were decreased with the increase in MoO₃ contents. As a result, the activities of catalysts with different loading rates for soot oxidation can be ranked as: Mo5<Mo10<Mo20<Mo40. Via pyrolysis kinetics analysis, it is revealed that Mo40 requires the minimum activation energy for soot oxidation, which fits well with the TG experimental results. In summary, the catalytic activity of MoO₃ breaks the threshold effect. Copyright © 2016 BCREC GROUP. All rights reserved

Keywords: soot oxidation; nano-scale MoO₃/TiO₂ catalysts; Starink method

How to Cite: Mei, C., Yuan, Y., Li, X., Mei, D. (2016). Microscopic Phase Structure of Mo-based Catalyst and Its Catalytic Activity for Soot Oxidation. *Bulletin of Chemical Reaction Engineering & Catalysis*, 11 (3): 389-397 (doi:10.9767/bcrec.11.3.608.389-397)

Permalink/DOI: <http://doi.org/10.9767/bcrec.11.3.608.389-397>

1. Introduction

Diesel engines, based on their high combustion efficiency, reliability, adaptability and cost-effectiveness, are widely applied in the heavy truck, coach, engineering machinery, ship, generators, etc. [1]. However, emissions exhausted from diesel engines are still the major environmental problem, although many

measures have been taken to reduce them. Among these, diesel particulate filter (DPF) is of great importance to diminish particulate matters from a diesel engine. Nevertheless, the filter must be regenerated periodically [2,3]. Currently, it has been a research focus to explore the efficient catalyst for soot oxidation with low light-off temperature and long service life.

Recently, different catalysts have been tested for soot oxidation, such as lead, cobalt, vanadium, molybdenum and copper oxides, noble metals, perovskites, etc. [4-6]. Among these

* Corresponding Author.

E-mail: meideqing@ujs.edu.cn (D. Mei)

catalysts, MoO₃ seems to be the most promising one. Many scholars found that the contact state between soot and catalysts played a vital role in reactions [7-9]. Toniolo [4] and Leocadio [5] found that the melting point of molybdenum-based catalyst is relatively low, which may lead to a liquid eutectic phenomena under high temperature. Thus, on the carrier surface, the active component MoO₃ has high mobility, which can improve the contact of soot with catalysts and then increase the conversion efficiency. With the unique two-dimensional layered structure combined by Van force [10], it is easy to separate a part of oxygen atoms from MoO₃, which helps to intensify the oxidation reaction. Furthermore, MoO₃ also has a high selectivity in producing carbon dioxide than carbon monoxide in oxidation reactions [6].

The molybdenum catalyst has particular and superior catalytic performance in many fields. As an instance, Li [11] successfully utilized the molybdenum catalyst in the selective oxidation of ethane to aldehydes. Feng [12] found that compared with other catalysts, the molybdenum catalyst is the best one for direct synthesis of mixed alcohols from synthesis gas. However, less research of molybdenum-based catalysts in the DPF regeneration has been done.

In this work, nano-scale MoO₃/TiO₂ catalysts with various loading rates were prepared through an impregnation method. The phase structure and surface species of catalysts were characterized through Brunner-Emmet-Teller (BET), Fourier Transform Infrared spectrometer (FT-IR), X-ray Diffraction (XRD), and Scanning Electron Microscope (SEM). The performance of soot oxidation over molybdenum-based catalysts was evaluated through a Thermogravimetric Analysis (TGA). Based on a Strarink method, the quantitative pyrolysis kinetics of soot oxidation over molybdenum-based catalysts was worked out, which helps to explore the catalytic mechanism and to provide a theoretical guidance for its practical application in DPF regeneration.

2. Experimentals

2.1. Preparation of catalysts

Compared with pure substance of MoO₃, the complicated catalyst of MoO₃ loading on TiO₂ owns excellent sulfur resistance and great specific surface area. Moreover, the easy electron transfer of nano-scale TiO₂-anatase can make molybdenum lie in a low chemical valence, which greatly promotes the activity of catalysts. Therefore, in many experiments,

TiO₂-anatase has been used as a support of catalyst.

Nano-scale TiO₂-anatase produced by Shanghai Aladdin Reagent Co. Ltd. was utilized as the support. The MoO₃ is from ammonium molybdate produced by Sinopharm Chemical Reagent Co. Ltd. The complicated MoO₃/TiO₂ catalysts with various loading rates of 5%, 10%, 20%, and 40% were prepared respectively by an equal volume impregnation method. Correspondingly, these catalysts were named as Mo5, Mo10, Mo20, and Mo40. The various predefined contents of MoO₃ were dropped into the precursor solution, and then the TiO₂ in fine powder was added to the pre-handled solution with a blend ratio of 1 g·mL⁻¹ according to the water absorption of TiO₂. The mixture was oscillated for 30 minutes by an ultrasonic oscillator after uniformly impregnating and stirring, and then it was stored at ambient temperature for 24 hours. Finally, it was dried for 12 hours at the temperature of 110 °C in an oven and then was calcinated for 6 hours at the temperature of 500 °C in a box-type resistance furnace.

2.2. Equipment of experiment

The specific surface area of the catalyst was tested by NDVA-2000e BET produced by Quantachrome in America. NEXUS-470 FT-IR produced by Nicolet in America was used to determine the chemical composition of catalysts through 32 times scanning. The scanning range was 4000~400 cm⁻¹ with a resolution of 4 cm⁻¹. The crystalline phases of catalysts were detected by an X-ray diffraction (BRUKER D8 ADVANCE with Cu-Ka radiation-40kV, 40mA) with a scanning rate of 4°·min⁻¹. The microstructure of catalysts was observed by using a JSM-7001F SEM produced by Oxford Instruments (OIMS) in UK.

The experiments of soot oxidation over molybdenum-based catalysts were performed in a TGA/DSC1 thermogravimetric analyzer made by METTLER in Swiss. Printex-U carbon black (Degussa) was used as a substitute of diesel soot in this study due to its similarity to diesel soot in structure constitution as well as the ideal experimental repeatability [14]. Nano-scale molybdenum-based catalysts with low melting point can provide more active sites and reduce the internal diffusion, so the catalysts and soot with a mass ratio of 5:1 were stirred adequately in a beaker. Parameters of thermogravimetric test were set as follows: the reaction gas was air with a flow rate of 50 mL·min⁻¹, and the sample was heated at a rate

of 10 °C.min⁻¹, and the programmed temperature rising range was set as 40~800 °C, and the weight of the sample was about 4 mg.

2.3. Thermogravimetric kinetics model

Recently, the iso-conversional method is one of the most widespread methods in thermal kinetics analysis, which can directly give out the activation energy without dynamics model function and thus avoids the errors caused by various assumptions of the reaction mechanism function. So, it can be called as a model-free method. Multiple scanning methods such as Flynn-Wall-Ozawa (FWO), Kissinger-Akahira-Sunose (KAS) and Boswell were presented according to different approximate processing method [15-17]. Starink summarized these three typical research results about iso-conversional method in recent years and presented Equation (1) [18]:

$$\ln\left(\frac{\beta}{T_s}\right) = -\frac{BE}{RT} + C_s \quad (1)$$

where: S , B , and C_s are constants; E is the activation energy(kJ·mol⁻¹); R is the molar gas constant (8.1345 J·(mol·K)⁻¹); T is the thermodynamic temperature (K); and β is the heating rate (K·min⁻¹).

Starink adjusted constants S and B by precisely analyzing temperature integral and then brought out the Equation (2):

$$\ln\left(\frac{\beta}{T^{1.8}}\right) = -1.0037\frac{E}{RT} + C_s \quad (2)$$

It was proved that Equation (2) is more accurate than Ozawa, Kissinger and Boswell equations [18]:

$$\ln \beta = -1.0516\frac{E}{RT} + C_o \quad (3)$$

$$\ln \frac{\beta}{T^2} = -\frac{E}{RT} + C_K \quad (4)$$

$$\ln \frac{\beta}{T} = -\frac{E}{RT} + C_B \quad (5)$$

where: C_o , C_K , and C_B are constants and represent Ozawa, Kissinger and Boswell respectively. The conversion ratio (α) is defined as:

$$\alpha = [(m_0 - m)/(m_0 - m_\infty)] \times 100\% \quad (6)$$

where: m is the current mass of sample (mg); m_0 is the initial mass of sample (mg); and m_∞ is the residual mass of sample (mg).

As a consequence, a group of thermodynamic temperatures under different heating rates were revealed by thermogravimetric analysis of soot oxidation under catalysts at each equal conversion ratio. A linear relationship between $\ln(\beta/T^{1.8})$ dan $1/T$ can be expected according to Equation (2). Correspondingly, the average activation energy (E) can be calculated by the slope of the fitted line.

3. Results and Discussion

3.1. Characterization of catalysts

3.1.1. Brunner-Emmet-Teller

The BET results of MoO₃/TiO₂ catalysts and N₂ adsorption-desorption are shown in Table 1. It is found that both the specific surface area and pore volume of catalysts were reduced with the increase in MoO₃ loading rate, because MoO₃ is easy to diffuse into micro pores and to make the blockage of micro pores in TiO₂ during impregnation and calcination. Besides, with high loading rates, more dense and smooth-faced crystals of MoO₃ were formed after roasting. Therefore, the specific surface areas and pore volumes of the catalyst were evidently reduced.

3.1.2. Fourier Transform Infrared Spectrometer

Fourier transform infrared spectroscopy has been a qualitative and quantitative widely used technique in industry featuring high sensitivity [19]. It can characterize the components by measuring characteristic infrared absorption bands. The FT-IR spectra of MoO₃ catalysts

Table 1. BET specific surface areas and pore volumes of MoO₃/TiO₂ catalysts

Sample	S_{BET} (m ² .g ⁻¹)	V_P (cm ³ .g ⁻¹)
soot	71.355	0.359
Mo5	40.717	0.289
Mo10	15.704	0.104
Mo20	3.982	0.034
Mo40	3.782	0.014

with different loading rates are shown in Figure 1.

Through the analysis, there was a very wide and intense band at both sides of 600 cm^{-1} , which is the flexible and variable-angle vibration of Ti–O in TiO_2 -anatase. The vibration band of Ti–O–Ti was at 1384.0 cm^{-1} . The broad vibration bands at 3427.2 cm^{-1} were flexible vibrations of Ti–O–H on the TiO_2 surface and H–O–H in the absorbed water. At the same time, the bending vibration band of H–O–H was at 1627.5 cm^{-1} . The evident absorption band formed at 989.9 cm^{-1} indicates that the active components of catalysts exist in the form of Mo=O. Besides, with the increase in MoO_3 contents, the bands became sharper and intenser. The results of FT-IR are in accordance with literatures about $\alpha\text{-MoO}_3$ [20].

3.1.3. X-ray diffraction

The X-ray diffraction technique has been widely used for the determination of crystalline phases in physics, chemistry, material science and other engineering technology [21]. The XRD patterns of molybdenum-based catalysts are presented in Figure 2. As shown in Figure 2 (a)–(e), TiO_2 crystal has not changed after calcination. The peaks in good accordance with XRD spectra of TiO_2 -anatase crystal were detected at $2\theta = 25.55^\circ, 37.15^\circ, 48.35^\circ, 54.15^\circ, 55.35^\circ,$ and 62.76° . The peak patterns were in good accordance with XRD spectra of TiO_2 -anatase crystal. There was no characteristic diffraction peak of MoO_3 detected in the XRD pattern of Mo5 catalyst, which proved that the loading rate did not reach its dispersion threshold. In Mo5 catalyst the MoO_3 crystals are small and

amorphous, which is basically identical with literature [22]. When the loading rate reached 10%, the characteristic diffraction peak of MoO_3 appeared and large crystals formed, which confirmed that the loading content exceeded its dispersion threshold. Besides, with the increase in loading rate, the diffraction peaks of MoO_3 are apparently characterized with narrow width, high peak and more crystallinity. Mo10, Mo20, and Mo40 all appeared the characteristic of orthorhombic crystal system ($\alpha\text{-MoO}_3$). The main diffraction peaks at $12.72^\circ, 23.30^\circ, 25.66^\circ, 27.28^\circ, 38.94^\circ,$ and 67.55° , respectively, corresponds to the crystal plane (020), (110), (040), (021), (060) and (100) of $\alpha\text{-MoO}_3$ (JCPDS card: 05-0508).

3.1.4. Scanning electron microscope

The SEM micrographs of $\text{MoO}_3/\text{TiO}_2$ catalysts with different loading rates are shown in Figure 3. The nano-scale carriers of TiO_2 are spherical with an average size of 25–30 nm. There are obvious pores and channels between particles. With the increase in MoO_3 contents, the crystallinity and particle size increase. Meanwhile, bright and dense structures of Mo20 and Mo40 appeared. The octahedral crystals can be clearly observed, which were indicated by an arrow in Figure 3 (d) and (e). The particle size of Mo20 and Mo40 is greater than 100 nm, which is in good accordance with precious characterization results.

3.2. Activity of $\text{MoO}_3/\text{TiO}_2$ catalysts

The activity of catalysts for soot oxidation was tested in a loose contact state, which was close to the real operation. TG and DTG data of

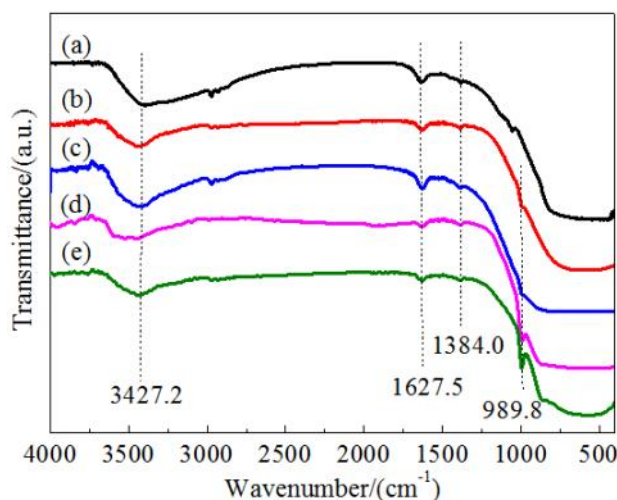


Figure 1. FT-IR spectra of $\text{MoO}_3/\text{TiO}_2$ catalysts (a: TiO_2 , b: Mo5, c: Mo10, d: Mo20, e: Mo40)

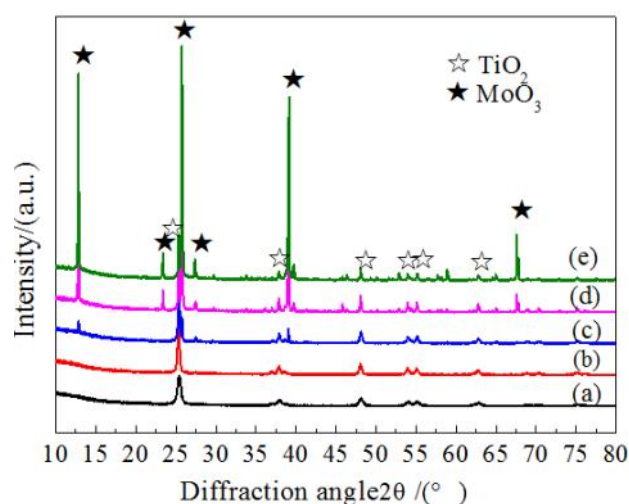


Figure 2. XRD spectra of $\text{MoO}_3/\text{TiO}_2$ catalysts (a: TiO_2 , b: Mo5, c: Mo10, d: Mo20, e: Mo40)

soot with MoO₃/TiO₂ catalysts with various loading rates are shown in Figure 4. The detailed characteristic parameters of soot oxidation are listed in Table 2. The light-off temperature (T_i) is defined as the temperature at which the initial 5% of sample weight is lost. The peak temperature (T_p) points to the temperature of maximum weight loss rate. The burn-out temperature (T_f) represents the temperature of the end of soot oxidation. The characteristic temperatures of T_i , T_p , and T_f were reduced obviously, which demonstrates the desirable activities of MoO₃ catalysts with various loading rates. This distinct performance of MoO₃ catalysts may result from its low melting point, which can enhance the surface mobility

obviously. With the increase of temperature, the active MoO₃ gradually melted and infused soot, which provided more active sites and then helped to accelerate soot oxidation. Meanwhile, the MoO₃ in orthorhombic phase is thermodynamic stable at high temperature, which ensures MoO₃ cannot transform into other types easily [20,23]. Besides, with the unique two-dimensional layered structure, it is easy for MoO₃ to promote the oxidation reaction by separating a part of oxygen atoms.

From Figure 4, it can be concluded that TG and DTG profiles of soot with catalysts gradually shift to lower temperature and the characteristic temperatures were decreased with the increase in MoO₃ contents. Compared with

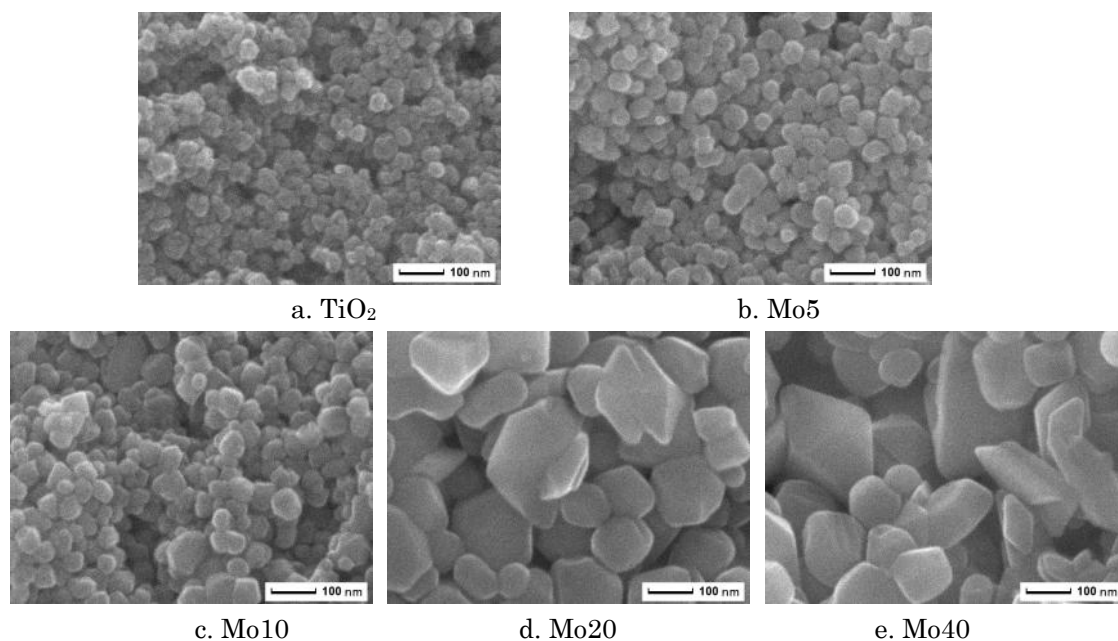


Figure 3. SEM images of MoO₃/TiO₂ catalysts

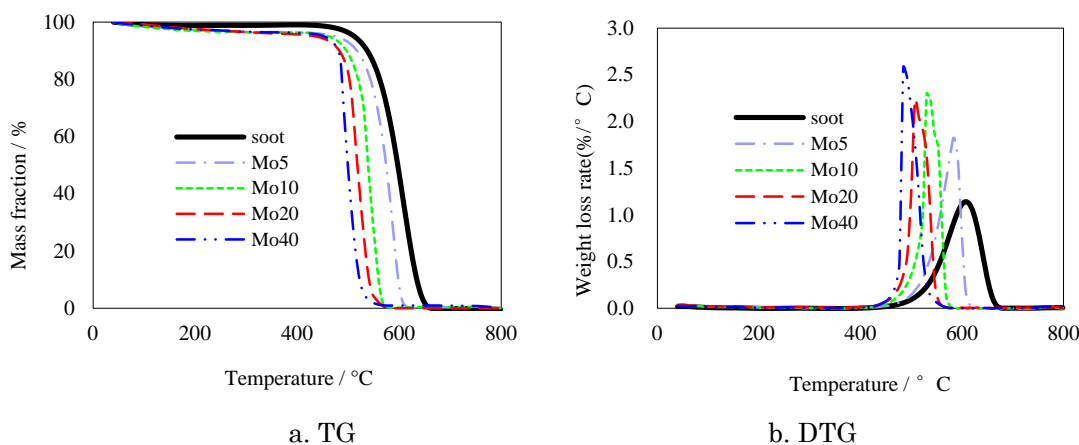


Figure 4. TG and DTG of soot with MoO₃/TiO₂ catalysts

none catalyst, Mo40 manifests the highest catalytic activity and the characteristic temperatures T_i , T_p , and T_f were decreased by 84.4 °C, 122.6 °C, and 122.7 °C, respectively.

Furthermore, on the basis of BET analysis, the catalytic activity of MoO₃/TiO₂ did not increase with the specific surface area, which may be attributed to that the complex soot oxidation reaction takes place on the gas-solid-solid tri-phase interface [24]. The specific surface area of catalysts does not play a key role as usual.

3.3. Pyrolysis kinetics

The activation energy is supposed as the minimum energy needed to maintain a chemi-

cal reaction. It serves as an important indicator to evaluate the activity of catalysts due to its significance in the soot oxidation reaction. For each catalyst with various loading rate of 5%, 10%, 20%, and 40%, the $\ln(\beta/T^{1.8})$ varying with $1/T$ is plotted at the conversion rate of 0.2, 0.3, 0.4, 0.5, 0.6, 0.7, and 0.8. According to the Starink method, the $\ln(\beta/T^{1.8})$ and $1/T$ are expected in a linear relationship, and then a group of fitted line, as shown in the Figure 5, were obtained by the discrete dots at each same conversion rate. The activation energy values, given in Table 3, were calculated. The square of the Pearson's correlation coefficients (R^2) were all greater than 0.98, which proved that the equation has a high fitting degree.

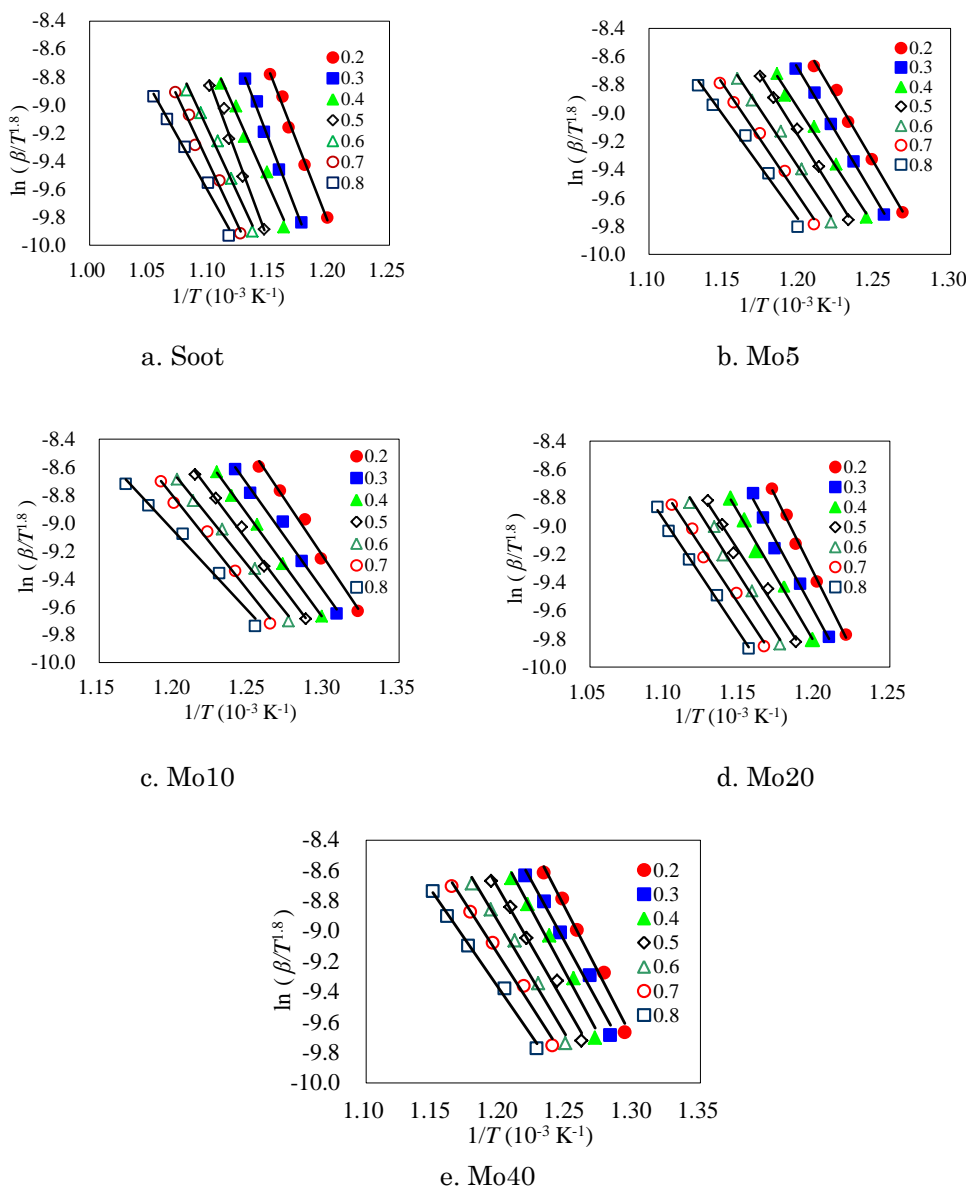


Figure 5. Linear relationship between $\ln(\beta/T^{1.8})$ and $1/T$ by the Starink method

As shown in the Table 3, the activation energy of soot oxidation was decreased as the reaction was taken place in the catalytic circumstance [25-27]. This occurs because the soot oxidation starts at a lower temperature. With the rise in temperature, the reaction became easier and fierce. Besides, it was revealed that the activation energy was decreased continually with the increase in MoO₃ contents from the Table 3. Among all the tested samples, the Mo40, owning the highest activity, demonstrates the lowest activation energy (116.41 kJ·mol⁻¹) for soot oxidation, which fits well with the results shown in Figure 4.

4. Conclusions

The loading rates have great effects on the phase structure and catalytic activity of MoO₃ catalysts. With the increase in MoO₃ loading rate, the particle size of catalysts became larger, and both the specific surface areas and pore volumes of catalysts were reduced. The characteristic diffraction peaks of octahedral crystals (α-MoO₃) appeared in the XRD pattern of catalysts when the loading rate of MoO₃ exceeds 10%. Based on the characteristic tem-

peratures of soot oxidation for each sample, Mo40 manifests the highest activity compared with the non-catalyzed sample, of which the characteristic temperatures T_i , T_p , and T_f were decreased by 84.4 °C, 122.6 °C, and 122.7 °C, respectively. Based on the Starink method, the MoO₃/TiO₂ catalysts were characterized quantitatively in the soot oxidation. The activation energy for soot oxidation can be ranked as soot < Mo5 < Mo10 < Mo20 < Mo40, which fits well with the TG results. For the catalysts in this study, Mo40 owns the minimum activation energy (116.41 kJ·mol⁻¹) of soot oxidation.

Acknowledgement

The authors wish to express their appreciation for the funds from the National Natural Science Foundation of China (No. 51376095 and No. 51506101), which supported this study.

References

- [1] Wei, L., Ya, C., Wang, Q., Pan, W., Han, G . (2015). Combustion and emission characteristics of a turbocharged diesel engine using high premixed ratio of methanol and diesel fuel. *Fuel*, 140: 156-163.

Table 2. Characteristic parameters of soot oxidation under MoO₃/TiO₂ catalysts

Sample	Ignition temperature T_i /°C	Temperature of weight loss peak T_p /°C	Burnout temperature T_f /°C	Maximum weight loss rate /(%·°C ⁻¹)
soot	507.7	607.3	661.0	1.14
Mo5	469.3	584.3	607.3	1.83
Mo10	454.0	530.7	569.0	2.29
Mo20	438.6	507.6	553.7	2.22
Mo40	423.3	484.7	538.3	2.58

Table 3. Activation energy of soot oxidation over MoO₃/TiO₂ catalysts

Conversion rate α	Activation energy E /kJ mol ⁻¹				
	soot	Mo5	Mo10	Mo20	Mo40
0.2	181.67	175.42	150.10	141.39	132.57
0.3	184.90	161.48	148.53	133.23	124.68
0.4	159.62	149.86	136.65	135.55	121.59
0.5	192.65	135.25	142.42	126.68	117.90
0.6	153.38	138.75	133.28	122.91	110.48
0.7	151.78	132.80	131.01	113.41	111.96
0.8	127.21	131.96	122.35	106.11	95.69
average	164.46	146.50	137.76	125.61	116.41

- [2] Phelps, A., Kirby, K.W., Gregoire, D.J. (2011). Resistive heater geometry and regeneration method for a diesel particulate filter. *US, US8043658*.
- [3] Araki, Y. (1998). Device for purifying the exhaust gas of a diesel engine: EP, *US5711149 A*.
- [4] Toniolo, F.S., Barbosa-Coutinho, E., Schwaab, M., Leocadio, I.C.L., Aderne, R.S., Schmal, M., Pinto, J.C. (2008). Kinetics of the catalytic combustion of diesel soot with $\text{MoO}_3/\text{Al}_2\text{O}_3$ catalyst from thermogravimetric analyses. *Applied Catalysis A: General*, 342(1-2): 87-92.
- [5] Leocadio, I.C.L., Braun, S., Schmal, M. (2004). Diesel soot combustion on $\text{Mo}/\text{Al}_2\text{O}_3$ and $\text{V}/\text{Al}_2\text{O}_3$ catalysts: investigation of the active catalytic species. *Journal of Catalysis*, 223(1): 114-121.
- [6] Braun, S., Appel, L.G., Schmal, M. (2005). Molybdenum species on alumina and silica supports for soot combustion. *Catalysis Communications*, 6(1): 7-12.
- [7] Matarrese, R., Castoldi, L., Artioli, N., Finocchioni, E., Buscab, G., Lietti, L. (2014). On the activity and stability of $\text{Pt-K}/\text{Al}_2\text{O}_3$ LNT catalysts for diesel soot and NO_x abatement. *Applied Catalysis B: Environmental*, 144(2): 789-791.
- [8] Neeft, J.P.A., Pruisen, O.P.V., Makkee, M., Moulijn, J.A. (1997). Catalysts for the oxidation of soot from diesel exhaust gases II. Contact between soot and catalyst under practical conditions 1. *Applied Catalysis B Environmental*, 12(1): 21-31.
- [9] Rodríguez-Fernández, J., Oliva, F., Vázquez, R.A. (2011). Characterization of the diesel soot oxidation process through an optimized thermogravimetric method. *Energy & Fuels*, 25(5): 2039-2048.
- [10] Mohan, V.M., Hu, B., Wen, C. (2010). Enhancement of electrochemical properties of MoO_3 nanobelts electrode using PEG as surfactant for lithium battery. *Journal of Solid State Electrochemistry*, 14(10): 1769-1775.
- [11] Li, J., Liu, J., Ren, L., Zhao, Z., Chen, Y., Zhu, P., Wei, Y., Duan, A., Jiang, G. (2014). Selective oxidation of ethane to aldehydes over SBA-15 supported molybdenum catalyst. *Journal of Energy Chemistry*, 23(5): 609-616
- [12] Feng, M. (2012). Review of Molybdenum Catalysts for Direct Synthesis of Mixed Alcohols from Synthesis Gas. *Recent Patents on Catalysis*, 1: 13-26.
- [13] Martin, I., And, J.H.H., Hartland, G.V. (1998). Effect of Structure on Electron Transfer Reactions between Anthracene Dyes and TiO_2 Nanoparticles. *Journal of Physical Chemistry B*, 102(47): 9508-9517.
- [14] Sharma, H.N., Pahalagedara, L., Joshi, A., Suib, S.L., Mhadeshwar, A.B. (2012). Experimental study of carbon black and diesel engine soot oxidation kinetics using thermogravimetric analysis. *Energy & Fuels*, 26(9): 5613-5625.
- [15] Ozawa, T. (1965). A new method of analyzing thermogravimetric data. *Bulletin of the Chemical Society of Japan*, 38(11): 1881-1886.
- [16] Kissinger, H.E. (1957). Reaction kinetics in differential thermal analysis. *Analytical Chemistry*, 29(11): 1702-1706.
- [17] Boswell, P.G. (1980). On the calculation of activation energies using a modified Kissinger method. *Journal of Thermal Analysis and Calorimetry*, 18(2): 353-358.
- [18] Starink, M.J. (1996). A new method for the derivation of activation energies from experiments performed at constant heating rate. *Thermochimica Acta*, 288(1/2): 97-104.
- [19] Alben, J.O., Fiamingo, F.G. (1984). Fourier Transform Infrared Spectroscopy-Optical Techniques in Biological Research-3. *Optical Techniques in Biological Research*, 17(4): 133-179.
- [20] Diao, Z., Kwong, F.L., Li, J., Lian, J., Lai, K.T., Ng, D.H. (2012). Catalytic Activity of Biomorphic $\alpha\text{-MoO}_3$ in the Degradation of Methyl Violet Dye. *Environmental Engineering Science*, 29(9): 860-865.
- [21] Albers, A.P.F., Melchiades, F.G., Machado, R., Baldo, J.B., Boschi, A.O. (2002). A simple method for the characterization of clay minerals by X-ray diffraction. *Cerâmica*, 48(305): 34-37.
- [22] Shi, W., Cai, X., Wei, J., Ma, J., Hu, T., Wu, N., Xie, Y. (2001). EXAFS study of molybdenum oxide on the structure Al_2O_3 . *Surface & Interface Analysis*, 32(1): 202-204.
- [23] Varga, T., Moats, J.L., Ushakov, S.V., Navrotsky, A. (2007). Thermochemistry of $\text{A}_2\text{M}_3\text{O}_{12}$ Negative Thermal Expansion Materials. *Journal of Materials Research*, 22(9): 2512-2521.
- [24] Shangguan, W.F., Teraoka, Y., Kagawa, S. (1997). Kinetics of soot- O_2 , soot- NO and soot- O_2 - NO reactions over spinel-type CuFe_2O_4 catalyst. *Applied Catalysis B: Environmental*, 12(2/3): 237-247.
- [25] Tomašić, V., Brnardić, I., Jenei, H., Kosar, V., Zrnčević, S. (2011). Combustion of active carbon as a model carbon material: Comparison of non-catalytic and catalytic oxidation. *Chemical and Biochemical Engineering Quarterly*, 25(3): 283-287.

- [26] Jelles, S.J., Krul, R.R., Makkee, M., Moulijn, J.A. (1999). The influence of NO_x on the oxidation of metal activated diesel soot. *Catalysis Today*, 53(4): 623-630.
- [27] Hernández, S., Blengini, G.A., Russo, N., Fino, D. (2012). Kinetic study of diesel soot combustion with perovskite catalysts. *Industrial & Engineering Chemistry Research*, 51(22): 7584-7589.